

PERSONALIZZAZIONI CUSTOMISATIONS

L'accurata selezione delle materie prime impiegate e la scrupolosa esecuzione del processo di lavorazione, stanno alla base della tecnica manifatturiera di Paoul; una cultura artigianale che trae le sue origini dal Distretto calzaturiero della Riviera del Brenta, polo internazionale per la fabbricazione di scarpe di lusso. L'esperienza maturata in cinquant'anni di storia e la sensibilità artistica, donano ai maestri calzaturieri l'abilità di destreggiarsi tra le lavorazioni più complesse, rendendo possibile la personalizzazione del prodotto al singolo paio di calzature. Materiale e colore della tomaia, altezza e linea del tacco, suola e forma della pianta: possibilità di scelta che possono concretizzarsi con l'aggiunta di un lieve supplemento di prezzo e, nei casi più complessi, con l'approvazione stilistica e tecnica degli esperti di produzione.

The accurate selection of the raw materials employed and the scrupulous implementation of the working process are the basis of Paoul's manufacturing technique; an artisanal culture which draws its origins from the footwear District of the Riviera del Brenta, an international pole for the production of luxury shoes. The experience acquired during fifty years of history and the artistic sensibility, give to our shoe experts the ability to juggle among the most complex procedures, making possible the customisation of the product even for one pair of shoes. From the material chosen for the uppers, to their colour, from the heel height and heel line, to the sole and its width: these are the choices that we can make possible with a small price supplement and, in the more complex cases, with the stylistic and technical approval of our manufacturing experts.



Forma

La forma è un elemento rigido che riproduce in volume la sagoma del piede ed è utilizzata per modellare la tomaia in fase di montaggio della calzatura.

Essa varia in base alla tipologia di scarpa e all'altezza del tacco, pertanto è necessario tenerne conto per la corretta presa dell'ordine. A tal proposito, si rinvia alla **Guida alle taglie** per un confronto in centimetri tra l'impronta del piede del cliente e la forma stessa. Oltre a questo strumento, i dettagli tecnici stampati sul fronte scatola consentono di ottenere riferimenti precisi di articolo, tacco e relativa linea, forma, materiale, colore e taglia.

Per ottimizzare la calzatura dei piedi più complessi, Paoul offre una gamma di forme più larghe o più strette: pianta extra-stretta, 1 taglia in meno in larghezza; pianta stretta, 1/2 taglia in meno; pianta larga, 1/2 taglia in più; pianta extra larga, 1 taglia in più. Qualora ciò non bastasse, sarà possibile un confronto diretto con l'area stilistica dell'azienda per valutare una forma specifica per la singola persona.

Last

The last is a rigid element, which reproduces the foot's shape in volume and it is used to model the upper when the shoe is being assembled.

Its structure changes based on the type of shoes and on the heel height, therefore it is important to take it into account when the order is prepared. In this respect, you can refer to the **Size guide** for a comparison in centimetres between the customer's footprint and the last itself. Apart from this instrument, there are technical details printed in front of the box that enable the customer to have precise references about article, heel and relative style, last, material, colour and size.

To optimise the fitting of more complex feet, Paoul offers a wide range of larger and narrower shapes: extra-narrow, 1 size less in width; narrow, 1/2 size less; large, 1/2 size more; extra-large, 1 size more. If it is not enough, a direct comparison with the stylistic area of the company will be possible to evaluate a specific shape for the single individual.



Sandalo punta quadrata
Squared point sandal



Sandalo punta rotonda
Rounded point sandal



Sandalo punta quadrata con pianta larga
Squared point sandal with large width



Décolleté punta rotonda
Rounded point court



Décolleté punta fina
Fine point court



Décolleté punta rotonda con pianta larga
Rounded point court with large width



Spuntato
Open toe



Punta chiusa
Closed toe



Punta cuccarini
Cuccharini point



Ballerina
Ballerina flat



Uomo flex
Man flex



Uomo classico
Man classic

Tacco

Il tacco è un elemento determinante per l'assetto strutturale della calzatura. La sua posizione perfetta garantisce un equilibrio stabile e la corretta postura del corpo. Per questa ragione, è errato abbassare o alzare il tacco dopo la realizzazione della calzatura. L'operazione compromette i requisiti qualitativi tipici del prodotto certificato Paoul.

Paoul, nell'ottica di garantire un servizio completo, fornisce anche gli accessori utili alla manutenzione del tacco ovvero sopratacchi e salvatacchi.

Il soprataccho è un elemento rigido che va applicato sul fondo del tacco per proteggerlo dall'usura. È importante eseguire una periodica manutenzione, sostituendolo quando il consumo ne deforma la sagoma, per avere un tacco sempre stabile e performante. Per cambiare il soprataccho, basta estrarre delicatamente con delle pinze quello vecchio e inserire il nuovo. Il salvataccho è un elemento trasparente che riveste il soprataccho con lo scopo di salvaguardarne la struttura, nelle cerimonie all'aperto, e proteggere la pavimentazione in parquet durante le competizioni di danza sportiva. Per applicarlo, basta incapsulare il soprataccho nel salvataccho plasmando la plastica con il calore delle mani. In caso di difficoltà, avvicinarlo ad una fonte di calore per renderlo più malleabile.

Heel

The heel is a fundamental element for the shoe structure and balance. Its perfect position guarantees a stable equilibrium and a correct posture. For this reason, it is a mistake to lift or to lower the heel after the shoe creation. This operation compromises the qualitative requirements typical of Paoul certified product.

Paoul, with the intent to assure a complete service, provides also the accessories useful to the maintenance of the heel, which are heel tips and heel protectors.

The heel tip is a rigid element applied to the bottom of the heel to protect it from wear. It is important to have a regular maintenance, replacing it as soon as wear deforms its shape, to have always a stable and well-performing heel. To replace the heel tip it is necessary to delicately remove, with some pliers, the old piece and add the new one.

The heel protector is a transparent element applied to cover the heel tip with the purpose to safeguard its structure, during outdoor ceremonies, and to protect the parquet flooring during dance sport competitions. To apply the heel protector you just need to encapsulate the heel tip in the heel protector moulding the plastic with the warmth of the hands. In case of difficulties, you must approach it to a heat source to make it more malleable.

LINEA TANGO TANGO LINE



*non necessita di salvataccho
*no heel protector required

Salvataccho Heel protector



60T - 80T

Soprataccho Heel tip



40T



60T - 80T

LINEA INTERNAZIONALE
INTERNATIONAL LINE



Salvatacco
Heel protector



50I 60I - 70I - 80I - 100I - 120I

Sopratacco
Heel tip



LINEA ROCCHETTO
FLARE LINE



*non necessita di salvatacco
*no heel protector required

Salvatacco
Heel protector



50R - 60R - 70R - 80R - 90R 50R - 60R - 70R - 80R - 90R
con bufalo
with buffalo

Sopratacco
Heel tip



35R 50R - 60R - 70R - 80R - 90R

LINEA SPILLO
PIN LINE



Laccato rosso
Red lacquered



60/3 70/3 80/3 90/3 100/3

Laccato nero
Black lacquered



60/3 70/3 80/3 90/3 100/3

Laccato cipria
Powder lacquered



60/3 70/3 80/3 90/3 100/3

Salvatacco
Heel protector



60/3 - 70/3 - 80/3 90/3 100/3 60/3 - 70/3 - 80/3
con bufalo
with buffalo

Sopratacco
Heel tip



LINEA ARGENTINO
ARGENTINIAN LINE



70A

80A

Sopratacco
Heel tip



25INSEGNANTE, 40TT, 50C, 60F, 80G
25TEACHER, 40TT, 50C, 60F, 80G



25

40TT

50C

60F

80G

Insegnante
Teacher

Sopratacco
Heel tip



50C

TACCHI UOMO
MAN HEELS



10M



20M



20MB



20C



30C



30



30B



35 TEX



50 TEX



40



50



40F



40N

Suola

La suola è l'elemento della calzatura a contatto con la pavimentazione, soggetta a sollecitazioni e sfregamento. E' fondamentale mantenerla in buono stato di conservazione attraverso la manutenzione ordinaria o straordinaria, laddove necessario. Paoul offre una gamma di soles, che si differenziano per caratteristiche specifiche dei materiali, in funzione al bisogno della clientela.



Bufalo (donna)
Buffalo (woman)



Gomma (donna)
Rubber (woman)



Cuoio e cuoio effetto velluto (donna)
Hard leather and hard leather velvet effect (woman)

Sole

The sole is the element of the shoe in contact with the floor, and it is subject to stresses and rubbing. It is fundamental to maintain it in good conditions through a periodical or extraordinary maintenance, whenever it is necessary. Paoul offers a wide range of soles that differ for specific material characteristics, according to the customers' necessity.



Bufalo (uomo)
Buffalo (man)



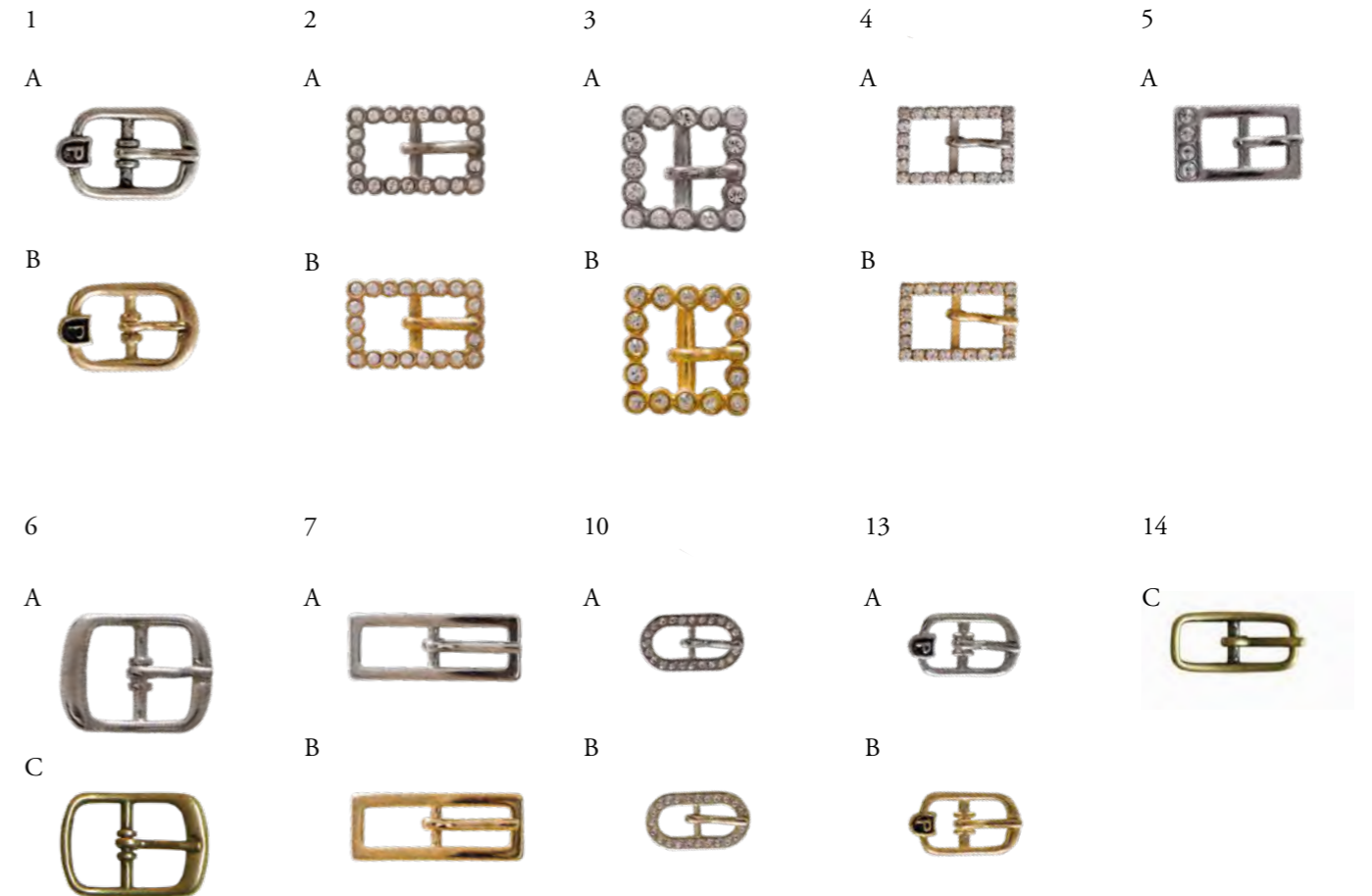
Gomma (uomo)
Rubber (man)



Cuoio (uomo)
Hard leather (man)

Fibbia

Elegante e preziosa, la fibbia è l'elemento che valorizza ulteriormente l'estetica del prodotto. Di seguito la gamma di fibbie proposta da Paoul.



Buckle

Elegant and precious, the buckle is the element, which refines the product's aesthetic impact even further. Below the range of buckles proposed by Paoul.

Zeppa

Struttura in microporosa, posta alla base della pianta del piede, utile per attutire gli effetti del movimento. La sua composizione offre una sensazione di morbidezza e comfort. Paoul dà la possibilità di montare zeppa di vario spessore e tipologia: interna, di 1 o 2 cm, o esterna di 1 o 2 cm. Nella presa dell'ordine, in assenza di calzature similari con zeppa dell'altezza desiderata, è buona regola considerare la forma con altezza di tacco inferiore di 1 o 2 cm rispetto a quella scelta dal cliente. Contattare il servizio clienti per la conferma d'ordine.

Esempi:
Examples:



Zeppa esterna di 1 cm
1 cm external platform

Platform

The platform has a microporous structure, applied to the base of the foot sole, it is useful to soften all the effects of movement. Its composition offers a soft and comfortable feeling. Paoul gives the possibility to assemble platforms of different thickness and typology: internal, of 1 or 2 cm, or external of 1 or 2 cm. In the absence of similar shoes with the desired height of the platform, preparing the order, it is a good rule to consider the shoe shape with a lower heel height of 1 or 2 cm than the one chosen by the customer. Please contact the customer service for the order confirmation.



Zeppa esterna di 2 cm
2 cm external platform

Accessorio

Paoul mette a disposizione una varietà di accessori per impreziosire ulteriormente la calzatura da applicare su tomaia o tallone per un outfit su misura. Segnalaci l'accessorio del modello che preferisci.



Accessory

Paoul offers a wide range of accessories to embellish, even more, your shoe to apply on the upper or on the heel for a custom-made outfit. Signal us the accessory of the model you prefer.



Materiale

Camoscio, capretto, glitter, lamé, pizzo, raso sono solo alcuni dei materiali tra cui scegliere per creare una calzatura unica e preziosa. Differenze estetiche e tattili ma requisiti qualitativi identici, basati su un concetto di eccellenza imprescindibile: traspirazione, flessibilità, morbidezza, durezza...
Le venature presenti sul pellame sono attestazione di pregio poiché la colorazione della materia prima è ridotta al minimo, nel processo di concia, per favorire la traspirazione della pelle. Paoul offre inoltre l'opportunità di ampliare la gamma di colori e tonalità, attingendo alla propria riserva di pellami e tessuti non seriali o producendo la nuance perfetta attraverso la tinteggiatura del raso.

CAMOSCIO
SUÈDE



Giallo
Yellow



Cipria
Powder



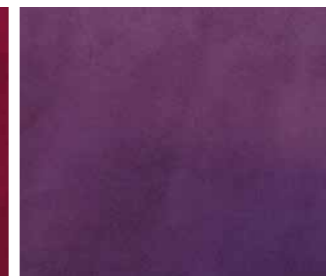
Pesca
Peach



Rosso
Red



Bordeaux
Bordeaux



Prugna
Plum



Verde acquamarina
Aquamarine green



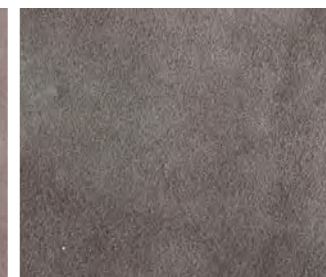
Turchese
Turquoise



Blu royal
Royal blue



Nocciola
Hazel



Tortora
Dove-grey



Grigio
Grey

Material

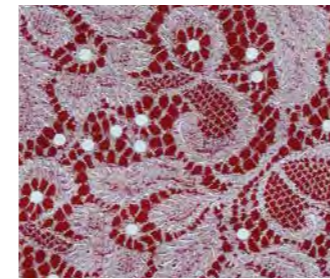
Suède, kid, glitter, lamé, lace, satin are only few of the materials among which you can choose to create a unique and precious shoe. There are aesthetic and tactile differences but the quality requirements are the same, based on an essential concept of excellence: transpiration, flexibility, softness, durability...
The grains on the leather are a certification of quality because the colouring of the raw material is reduced to the minimum during the tanning process, to facilitate the leather transpiration. Moreover, Paoul offers the opportunity to extend the range of colours and shades, by drawing on its own stock of non-serial leathers and cloths or producing the perfect nuance thanks to the satin dyeing.



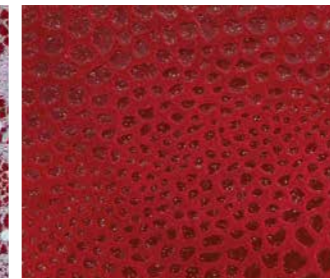
Viola
Violet



Nero
Black



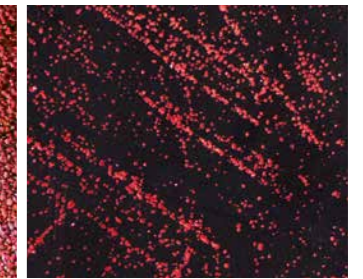
Pizzo rosso
Red lace



Glitter rosso
Red glitter



Vintage rosso
Red vintage



La paz 2 rosso e nero
Black and red La Paz 2

CAMOSCIO STAMPATO
PRINTED SUEDE



Wips argento
Silver wips



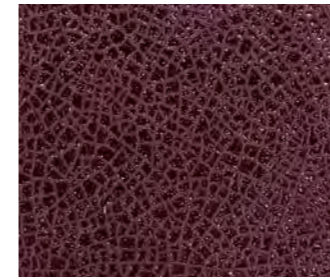
Fandango platino
Platinum fandango



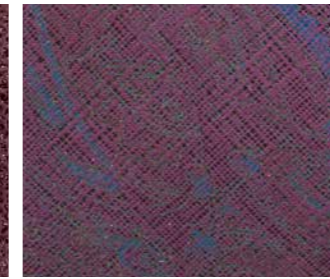
Nuvola alba
Down cloud



Fantasia 805
Fantasy 805



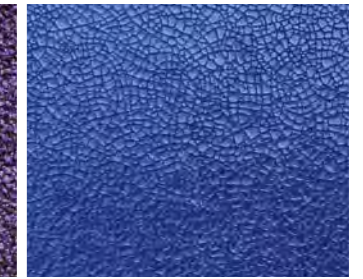
Polvere porpora
Purple dust



Versailles
Versailles



Vintage viola
Violet vintage



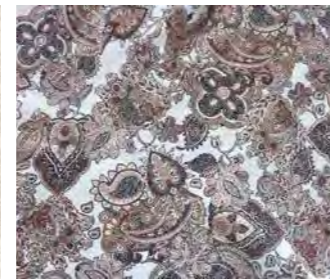
Pizzo blu
Blue lace



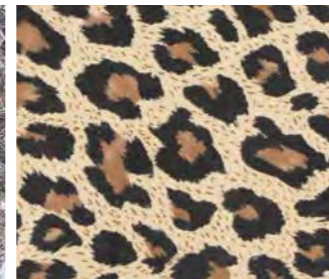
Fantasia 804
Fantasy 804



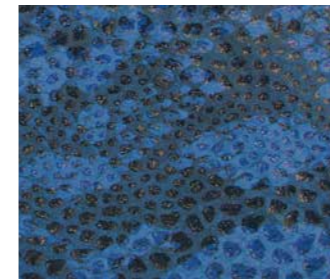
Pizzo beige
Beige lace



Flowers marrone
Brown Flowers



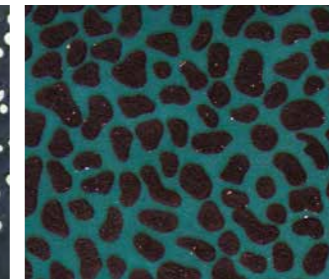
Leopardo
Leopard



Glitter blu
Blue glitter



Laser blu
Blue laser



Ghepardo
Ghepard



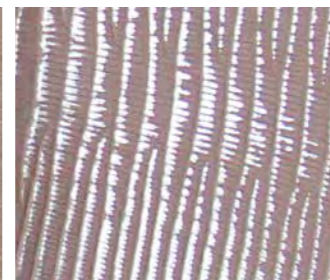
Jeans
Jeans



Polvere tortora
Dove grey dust



Calliope cipria e oro
Powder and gold calliope



Texas cipria e argento
Powder and silver texas



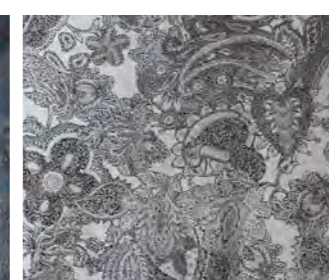
Rain tortora
Dove grey rain



Laser sabbia
Sand laser



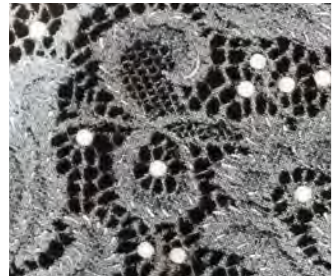
Damasco blu
Blue Damasco



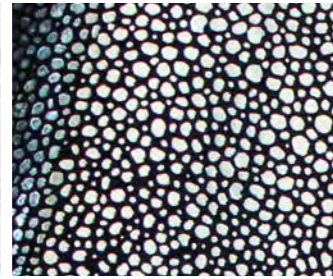
Flowers grigio
Grey Flowers



Treccia grigio e bianco
Grey and white plait



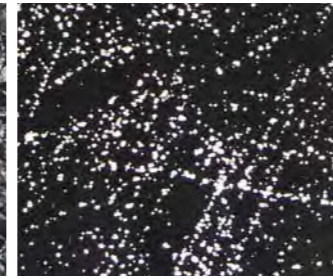
Pizzo nero
Black lace



Fantasia 344
Fantasy 344



Fandango nero
Black fandango



La paz 1 nero e argento
Black and silver La Paz 1



Platino
Platinum



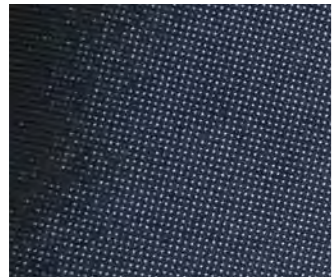
Platino effetto raso
Platinum satin effect



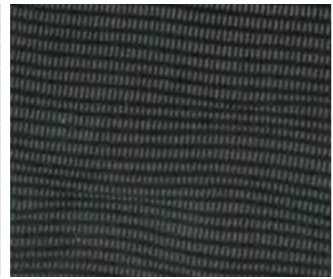
Canna di fucile
Gunmetal grey



Piombo
Pewter



Crystal glitter nero
Black crystal glitter

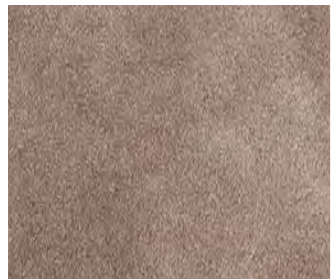


Lucertola nero
Black lizard



Anguilla nero
Black anguilla

CROSTA
CRUST



Nocino
Walnut



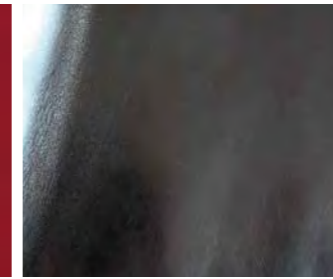
Caffè
Coffee



Nero
Black



Rosso
Red

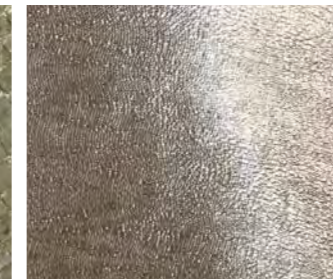


Nero
Black

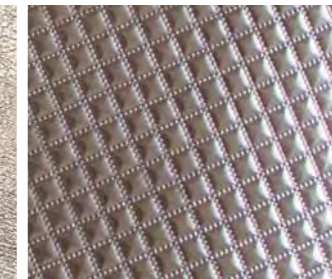
CAPRETTO STAMPATO
PRINTED KID



Piper
Piper



Verona acciaio
Steel Verona



Quadrato canna di fucile
Pewter square

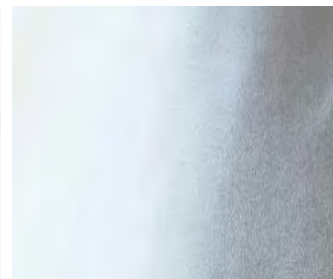


Rio grande
Rio grande

CAPRETTO
KID



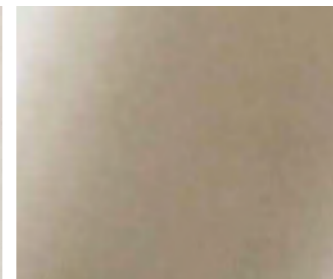
Argento
Silver



Argento effetto raso
Silver satin effect



Perla
Pearled



Beige
Beige



Fantasia fucsia
Fuchsia fantasy



Fantasia blu
Blue fantasy



Ramage nero e argento
Black and silver ramage

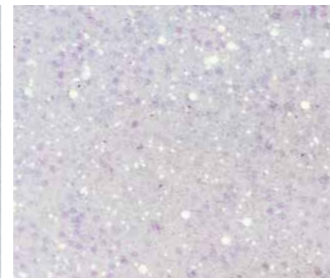
GLITTER
GLITTER



Sl08 ghiaccio
Ice sl08



Sl08 bianco
White sl08



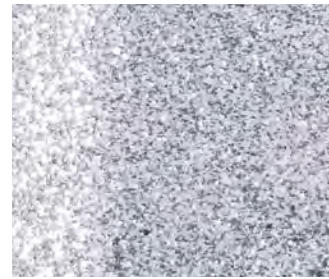
Sl01 bianco
White sl01



Sl08 argento
Silver sl08



Sl08 T29 multicolor
sl08 T29 multicolor



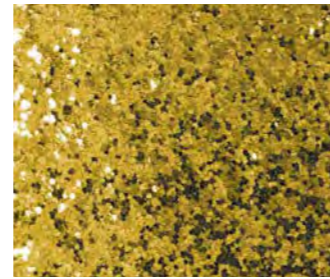
Sl01 argento
Silver sl01



Grease oro
Gold Grease



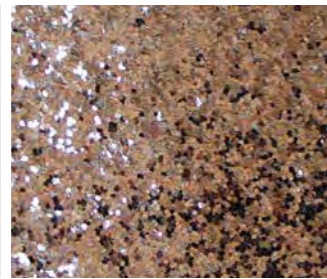
Sl08 platino
Platinum sl08



Sl01 oro
Gold sl01



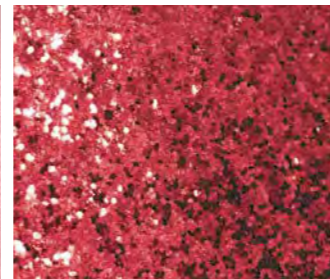
Sl08 bronzo
Bronze sl08



Sl01 bronzo
Bronze sl01



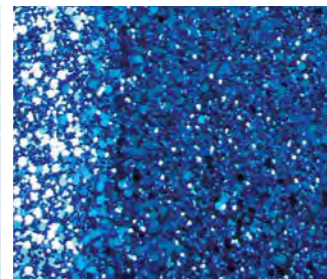
Sl08 rosso
Red sl08



Sl01 rosso
Red sl01



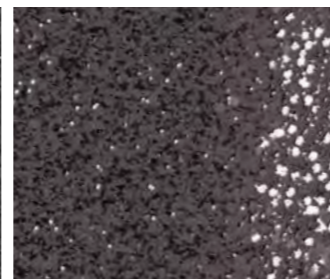
Sl08 azzurro
Light-blue sl08



Sl01 blu
Blue sl01

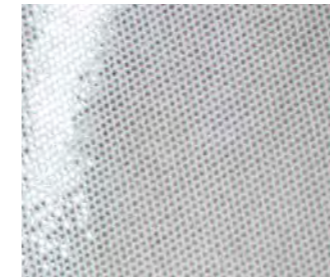


Sl08 nero
Black sl08

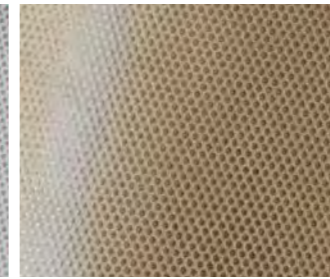


Sl01 nero
Black sl01

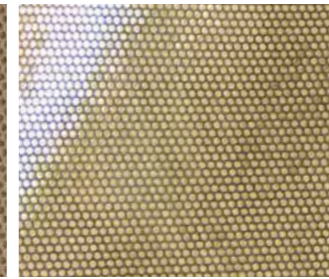
LAMÉ
LAMÉ



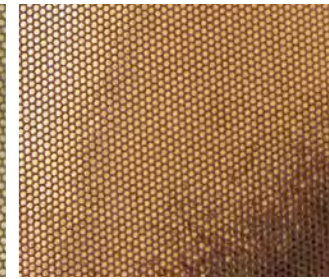
Argento
Silver



Carne
Flesh



Platino
Platinum



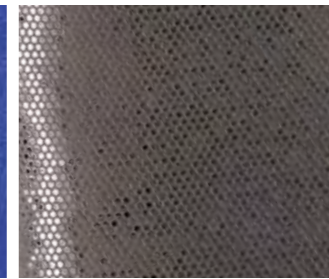
Bronzo
Bronze



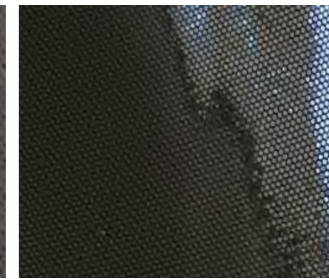
Rosso
Red



Blu
Blue

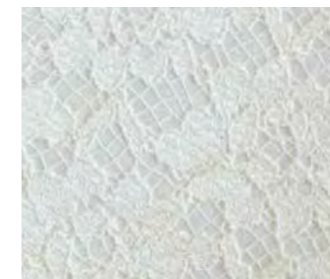


Canna di fucile
Gunmetal



Nero
Black

TESSUTO
CLOTH



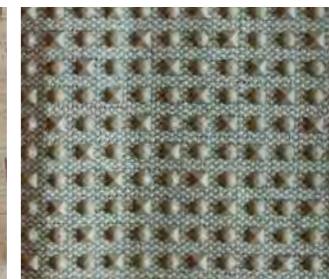
Pizzo avorio
Ivory lace



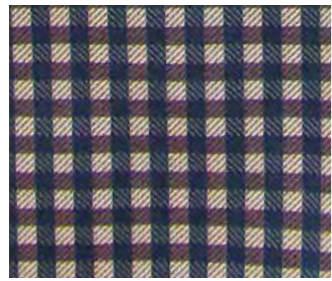
Jaquard
Jacquard



Sughero naturale
Natural cork



Lino stampato
Printed linen



Harris
Harris



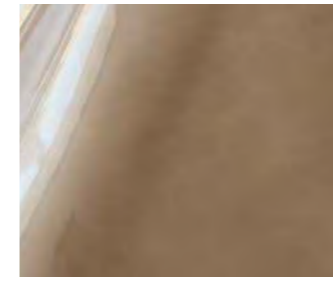
Fantasia Imperium
Imperium fantasy



Pizzo 2009
Lace 2009



Fantasia Hispania
Hispania fantasy



Tortora perlato
Pearled dove grey



Corallo
Coral



Rossa
Red



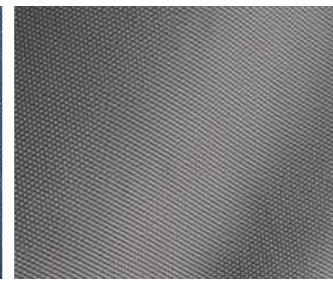
Fucsia
Fuchsia



Nilo
Nilo



Jeans
Jeans



Galaxy nudo
Nude Galaxy



Tirenet marrone/nero
Brown/black Tirenet



Azzurro cielo
Sky blue



Azzurro medio
Medium light-blue



Carta da zucchero
Robin's egg light-blue



Acquamarina chiara
Light aquamarine



Kevlar
Kevlar



Universo nero/argento
Black/silver Universe



Galaxy nero
Black Galaxy



Acquamarina media
Medium aquamarine



Acquamarina intensa
Strong aquamarine



Blu
Blue



Blu oltremare
Ultramarine blue

VERNICE
PATENT



Bianca
White



Beige
Beige



Rosa
Pink



Cipria
Powder

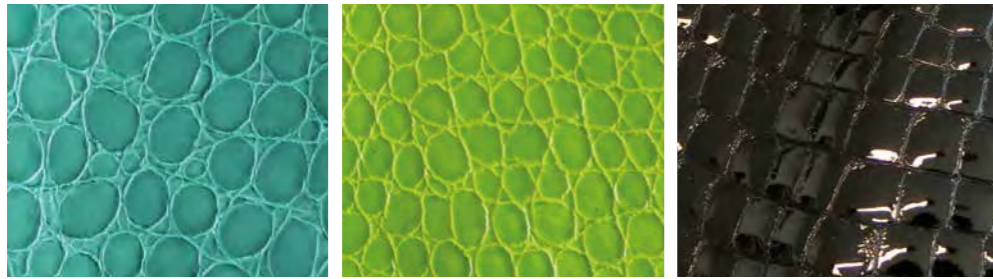


Blu naplak
Naplak blue



Nera
Black

VERNICE STAMPATA
PRINTED PATENT



Cocco azzurro
Light blue crocodile

Cocco verde
Green crocodile

Cocco nero
Black crocodile

RASO
SATIN



Bianco
White

Avorio 5
Ivory 5

Avorio 2
Ivory 2

Nudo
Nude

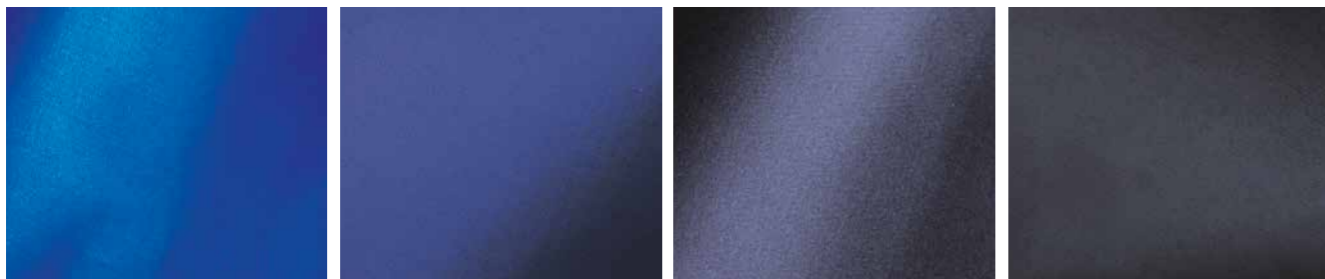


Carne chiaro
Flesh

Carne scuro
Tan

Rosso veneziano
Venetian red

Rosso
Red



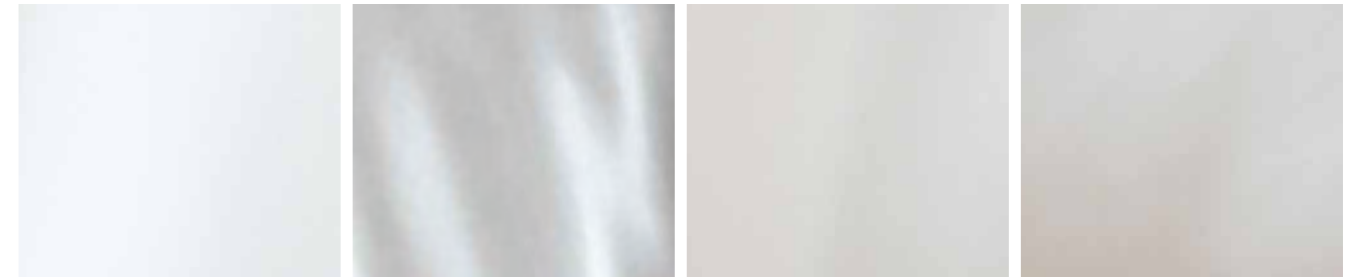
Blu royal
Royal blue

Blu 114
114 blue

Blu notte
Night blue

Nero
Black

VITELLO
LEATHER



Bianco
White

Bianco perlato
Pearled white

Fard
Blush

Burro
Butter

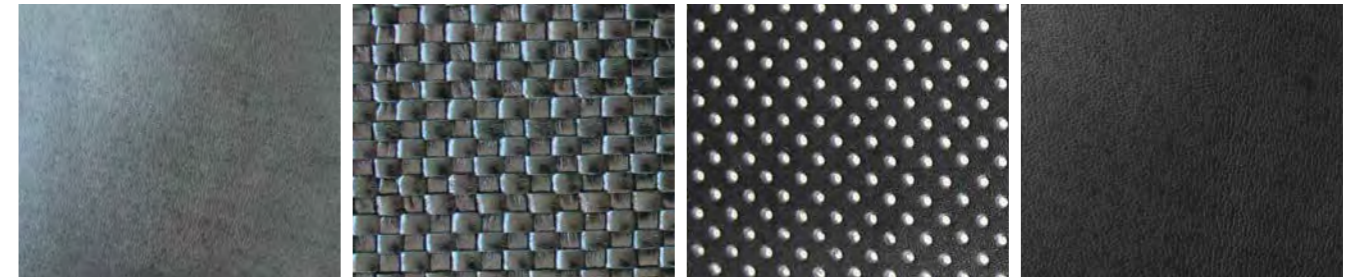


Carne
Flesh

Tortora
Dove grey

Greige intenso effetto nabuk
Warm greige nabuk effect

Rosso
Red



Grigio
Grey

Madras nero
Black madras

Forato nero
Black open-work

Nero
Black



Nabuk nero
Black nabuk

VITELLO STAMPATO
PRINTED LEATHER



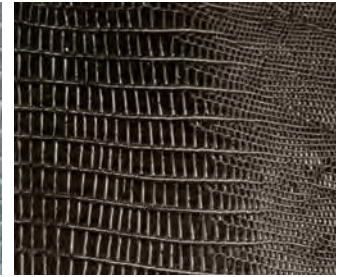
Tejus prugna
Plum tejus



Mini tejus blu
Mini blue tejus



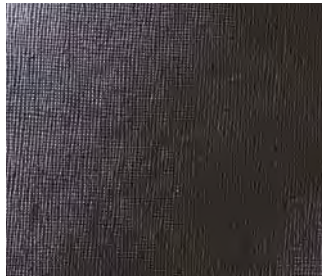
Cocco grigio
Grey printed crocodile



Tejus nero
Black tejus



Andalucia nero
Black Andalucia



Saffiano nero
Black saffiano

NAPPA
NAPPA LEATHER



Nudo
Nude



Marrone
Brown



Ferrer rosso
Red Ferrer



Ferrer cipria
Powder Ferrer



Grigio
Grey